



WORLD WIDE WEAVE

LEED Gold for "green court" in Brazil: Metallic mesh for environmentally friendly buildings



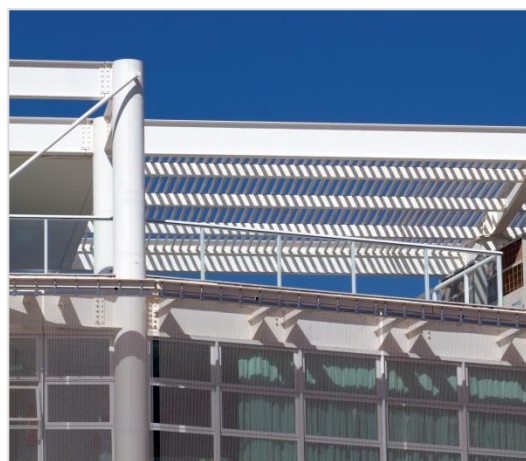
Picture 1: The courthouse „Tribunal de Justica do Distrito Federal dos Territórios” (TJDFT) in Brazil.



Picture 2: The Brazilian architect Siegbert Zanettini decided on stainless steel mesh from GKD for the sustainable facade.



Picture 3: The material guarantees natural air circulation here, while also providing protection from direct sunlight.



Picture 4: The panels were attached using the Fusiomesh bonding technique developed by GKD.

Picture 1-4 © GKD/Zanettini Arquitetura

We will be happy to send you the desired images in printable resolution by e-mail.

These images are meant exclusively for use in connection with this particular press release on the company GKD – GEBR. KUFFERATH AG. Any other use beyond this expressed purpose, especially use in connection with other companies, is strictly prohibited.

impetus.PR

Agency for Corporate Communications GmbH

Ursula Herrling-Tusch
Charlottenburger Allee 27-29
D-52068 Aachen

Tel: +49 [0] 241 / 1 89 25-10

Fax: +49 [0] 241 / 1 89 25-29

E-Mail: herrling-tusch@impetus-pr.de